

Special Thanks

Henri Barkey & Ellen Laipson
Gary Friend & Tara Sonenshine
Laura Rosberg & GDS
Temple Sinai

OUR SUPPORTERS - The 4615 PLAYERS

Our 2016-2017 season is made possible by the incredibly generous support of these people and organizations. Their contributions provide the foundation upon which our rogue's gallery of theatre-makers can continue to produce work that is both challenging and captivating. Visit 4615theatre.com to become a 4615 Player TODAY!

PRINCE OF DENMARK (\$1,000+)

Gary Friend and Tara Sonenshine
Chip and Michael Horberg

QUEEN OF THE FAIRIES (\$250+)

Henri Barkey and Ellen Laipson
Laury and Martin Sendek

GRAVEDIGGERS (\$100+)

Renee Beaver
Susan Berger
Carol and Jack Feder
Laura Foreman

GRAVEDIGGER (con't)

Peggy Heller
Paulina and George Nicopoulos
Mary and Jim O'Brien
Pamela Passman
Joe Selby
Richard Solomon
Catherine Weidner

GROUNDLING (\$50+)

Karen Hendrixson
Joseph Maloney
Paul Nass
Robert Soliz
Gail and Barry Wides

Rep Shows Sponsor:

ST. STEPHEN
AND THE INCARNATION
EPISCOPAL CHURCH



SAN ESTEBAN
Y LA ENCARNACION
IGLESIA EPISCOPAL

"Widening the Circle" | www.saintstephensdc.org

Loaves and Fishes

Episcopal Church of St. Stephen and the Incarnation
1525 Newton Street NW ♦ Washington, DC 20010
(202) 232-0900 ♦ www.loavesandfishesdc.org

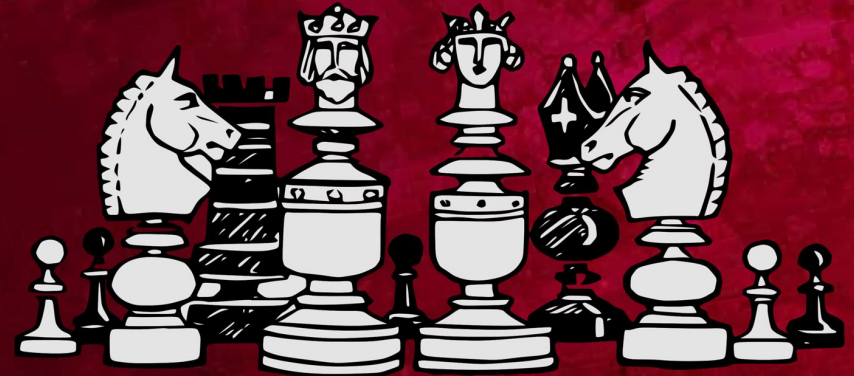
Our mission: to feed the hungry in our community and to educate volunteers and community members about hunger and homelessness.

Saturdays, Sundays and Federal Holidays since the mid-1960s.

July 22 - August 6
Tickets at 4615theatre.com

WOMEN BEWARE WOMEN

By Thomas Middleton
Directed by Jordan Friend



ST. STEPHEN
AND THE INCARNATION
EPISCOPAL CHURCH



SAN ESTEBAN
Y LA ENCARNACION
IGLESIA EPISCOPAL

4615
THEATRE COMPANY

DIRECTOR'S NOTE

Few writers of tragedies have as diabolical a sense of humor as Thomas Middleton. Capable of juggling pathos and absurdity in tandem, he forces audiences into the uncomfortable place of not knowing whether to gasp or grin. Usually, the answer is both.

As a spiritual descendant of Shakespeare, Middleton is also keenly aware of his heritage, and has a mixed relationship with it. In *Women Beware Women*, he uses just about every trope imaginable, from balcony romances to misplaced murders. It's all done lovingly, but with a certain dark twinkle in the eye. In Jacobean theatre, love is an illness that leads people to do very, very bad things, and his characters are simultaneously sympathetic and almost cartoonishly heinous in their behaviour.

The play is a tightrope between farce and believability, sentiment and snark. It is inherently self-referential, which makes the ending, set during a play-within-the-play, the encapsulation of all that has come before.

We begin with a couple not unlike Romeo and Juliet. But Middleton's Florence is a dangerous place, and everyone is someone else's pawn...

Jordan Friend

WOMEN BEWARE WOMEN

By Thomas Middleton

Directed by Jordan Friend

SCENE : Various Dark Corners of Florence, Italy

CAST

Charlie Cook.....LEANTIO, a dockworker
Caroline McQuaig.....BIANCA, a rich girl from Venice
Alexandra Nicopoulos.....MOTHER, a poor widow
Caroline Maloney.....LIVIA, a very rich widow
Drew Bowers.....HIPPOLITO, her younger brother
Andy Penn.....FABRITIO, her older brother
Morgan Sendek.....ISABELLA, his daughter
John Burghardt.....GUARDIANO, a socialite
Will Anderson.....WARD, his nephew
Jason Martin.....SORDIDO, his manservant
Sophie DeLeo.....SERVANT, Livia's right hand
Susannah Clark.....LADY 1, aide to the Duke
Jamie O'Brien.....LADY 2, aide to the Duke
Bess Epstein.....MESSENGER, new to the job
Nick Byron.....THE DUKE OF FLORENCE
Sophie DeLeo (again).....CARDINAL, the Duke's brother

CREW

STAGE MANAGER
Maya Barkey

SOUND DESIGN
Jordan Friend

ASST DIR/ CHOREOGRAPHY
Paige Washington

COSTUME DESIGN
Claire Brown
Paul Hogan

LIGHTING DESIGN
E-hui Woo
Eamon Abrahmson (assistant)

SET CONSTRUCTION
Nathaniel Sharer

4615
THEATRE COMPANY

JORDAN FRIEND
Artistic Director

ANNE DONNELLY
Managing Director

SUSANNAH CLARK
Literary Director

CLARE LOCKHART
Communications Director

ALEXANDER BURNETT
Development Director

NATHANIEL SHARER
Technical Director



**ONE CAST.
TWO SHOWS.**

Return to 4615 to see the same cast take on Shakespeare's melancholic comedy **LOVE'S LABOUR'S LOST**

Directed by Anne Donnelly

Saturday, July 23 @ 8pm
Thursday, July 28 @ 8pm
Saturday, July 30 @ 2pm
Wednesday, August 3 @ 8pm
Friday, August 5 @ 8pm

Visit 4615theatre.com for tickets!

COMING SOON

** Washington, D.C. Premiere **

ALIENS WITH EXTRAORDINARY SKILLS

By Saviana Stanescu

Directed by Susannah Clark

At the heart of Saviana Stanescu's **Aliens with Extraordinary Skills** lies the question of the American Dream - how to obtain it, yes, but, perhaps more importantly, to whom does it belong? Stanescu's funny, heartbreaking, and ultimately hopeful piece follows Nadia, a young Moldovan woman working as a birthday party clown in New York City. Her immigration status and questionable papers follow her like a spectre as she struggles to find her footing, pay her rent, and fall in love. With a loser musician, an exotic dancer, and fellow clown Borat by her side, Nadia weaves together her identity, legitimacy, voice, and balloon animals.

August 20 - August 28 | The Classroom @ Woolly Mammoth
Visit 4615theatre.com for tickets!

Welcome to 4615 Theatre....

...wherever that happens to be. Those of you who have chased us around the greater DC area for the past two years are used to not seeing the same space twice. We've popped up in everything from basements to gardens; from intimate studios to sprawling spaces like the one you find yourself in today.

Why put ourselves through the stress of hauling our sets and costumes in tightly packed cars? Sometimes I really do wonder, but it always comes about from a slightly dangerous game of "What If?" Each 4615 production is, at its core, an experiment. A group of twenty-somethings gather in a room and ask, "What haven't we done? What terrifies us a bit?"

Our ever so slightly masochistic delight for creating such obstacles is rooted in the tradition of Elizabethan and Jacobean theatre. Most plays of the time were rehearsed the day of the performance, with actors arriving memorized at 10am, having only a few hours to prepare, mostly to coordinate fights, dances, and group scenes. Much of the blocking that a director might so carefully pinpoint today was left at the mercy of the actors, taking their cues off of the clues hidden in the text.

The experiment for this summer is to recapture this spirit as much as possible. If we've done our job, these productions could theoretically happen just about anywhere. Fortunately, they happen to occur in a space as gorgeous as this.

I hope you enjoy being a vital part of our experiments, and that you'll continue to follow our young rogue's gallery around town, as we look for new ways give ourselves nightmares....

Jordan Friend
Artistic Director

**TO SUPPORT, OR BECOME A PART OF OUR
INSANITY, VISIT US AT....**

www.4615theatre.com